



Linking two worlds - EA and MS Project

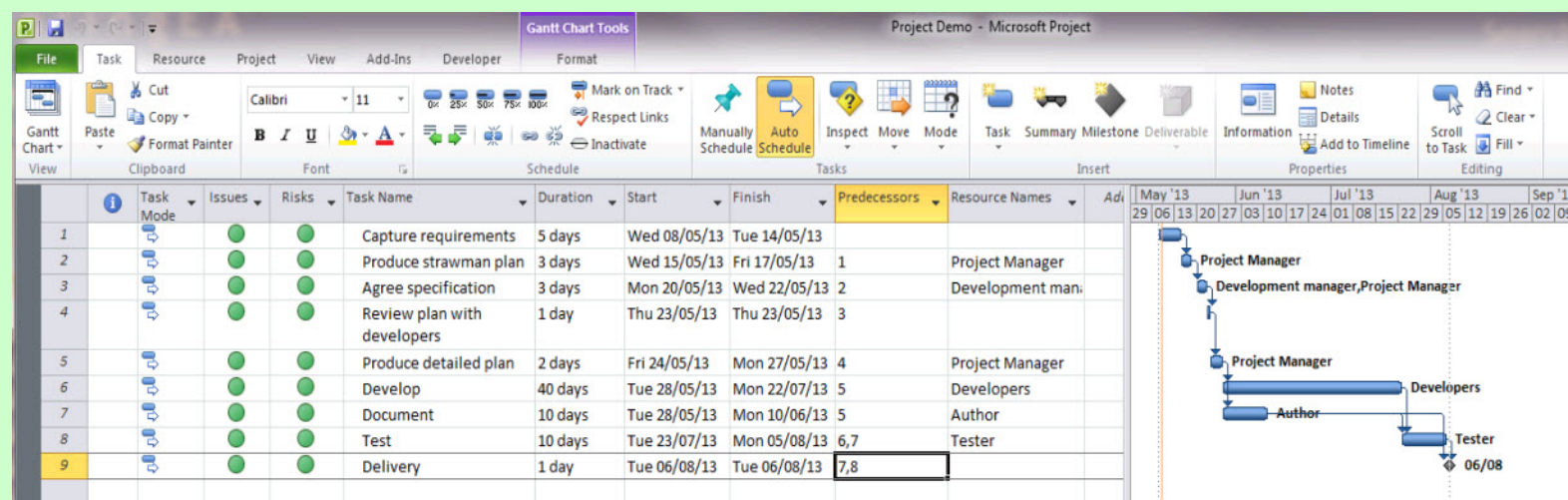
(in development - your input welcome)

Plans may be started in either Enterprise Architect (EA) or MS Project. Using **eaProject** you can link an EA model with an MS Project to share information and manage the project more effectively.

Access EA data from MS Project

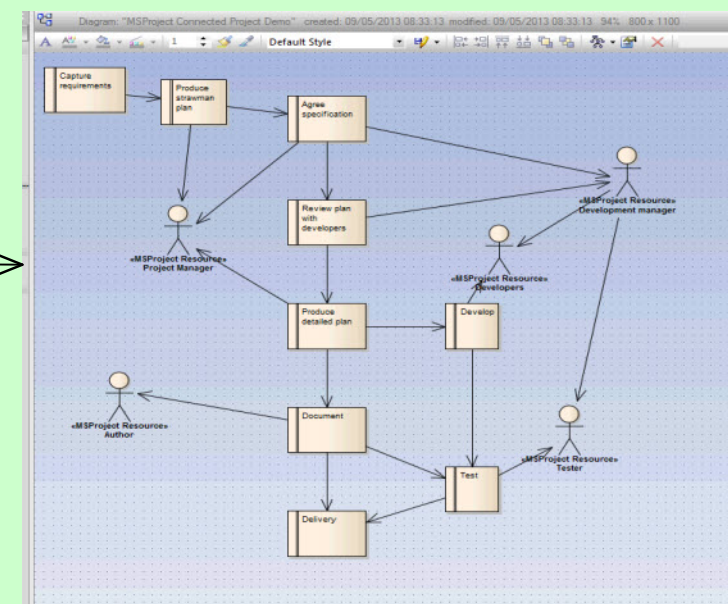
To get an idea of what **eaProject** offers let's look at an example scenario : This example takes an outline MS project plan into EA, where the EA users update the information adding Issues and Risks, which are then viewed within MS Project.

1. Start with a plan in MS Project

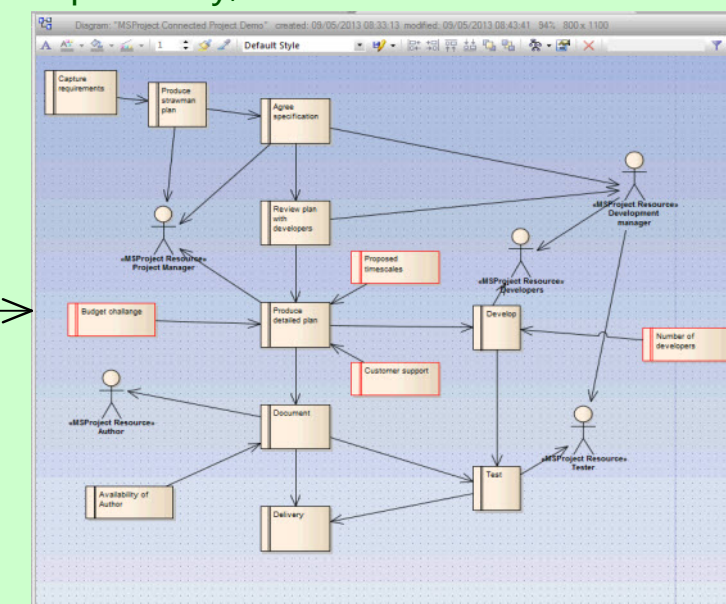


Access MS Project Information from EA

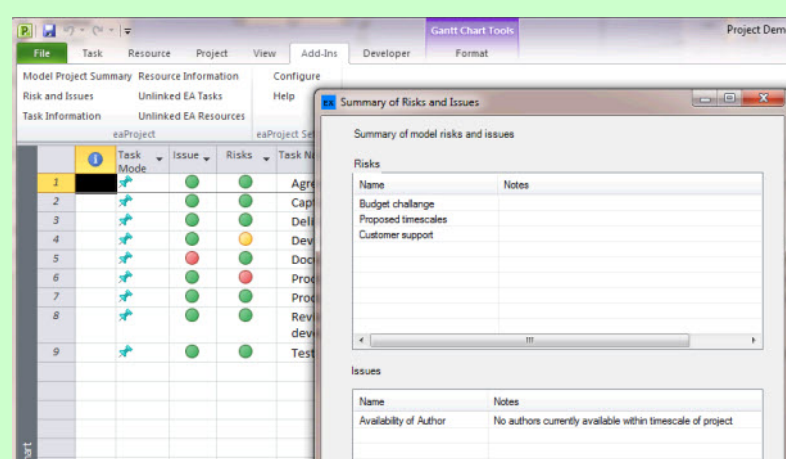
2. Import Task and Resource information into EA



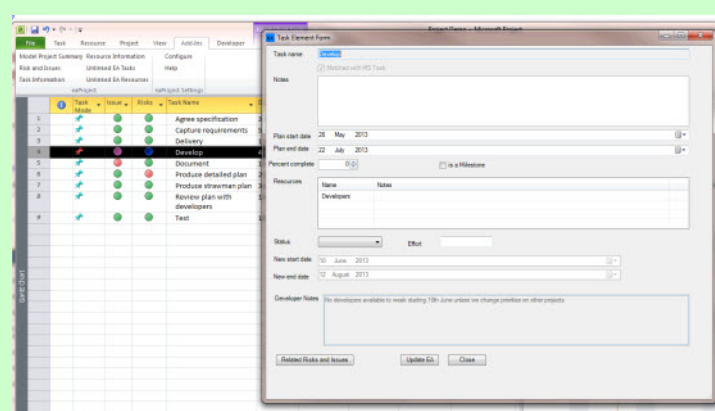
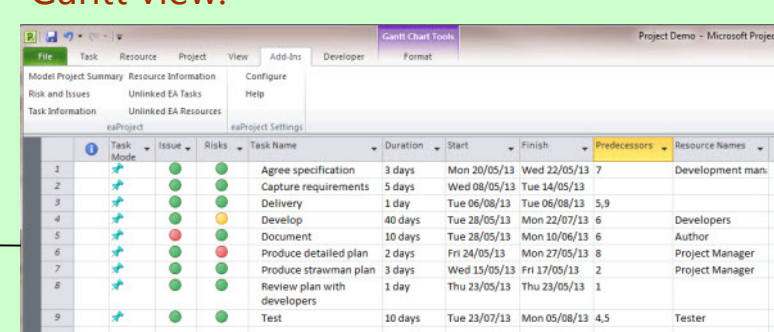
3. Link Task and Resource elements to related elements and importantly, to relevant Risks and Issues



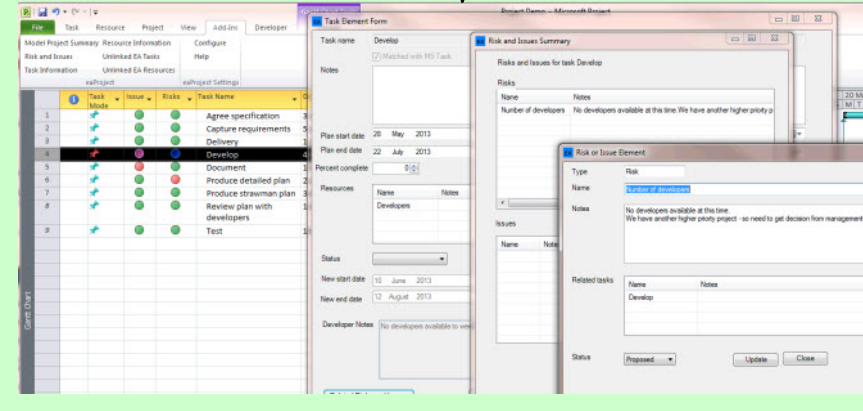
6. Inspect Risks and Issues relating to selected task



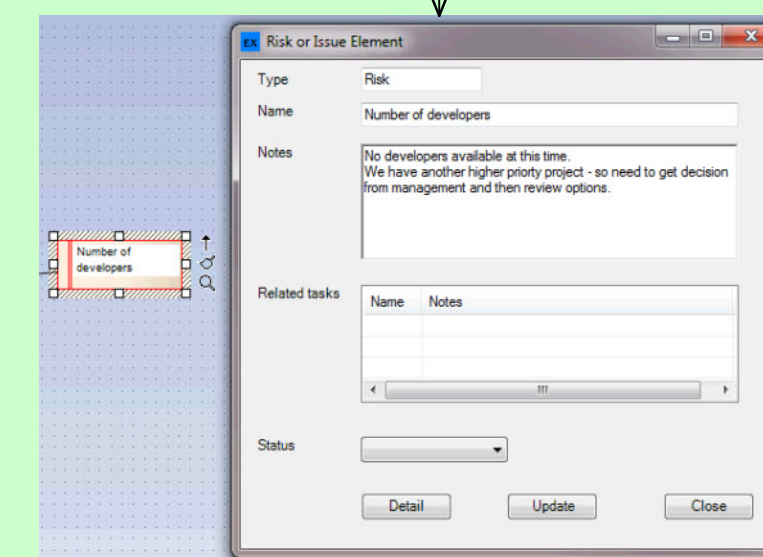
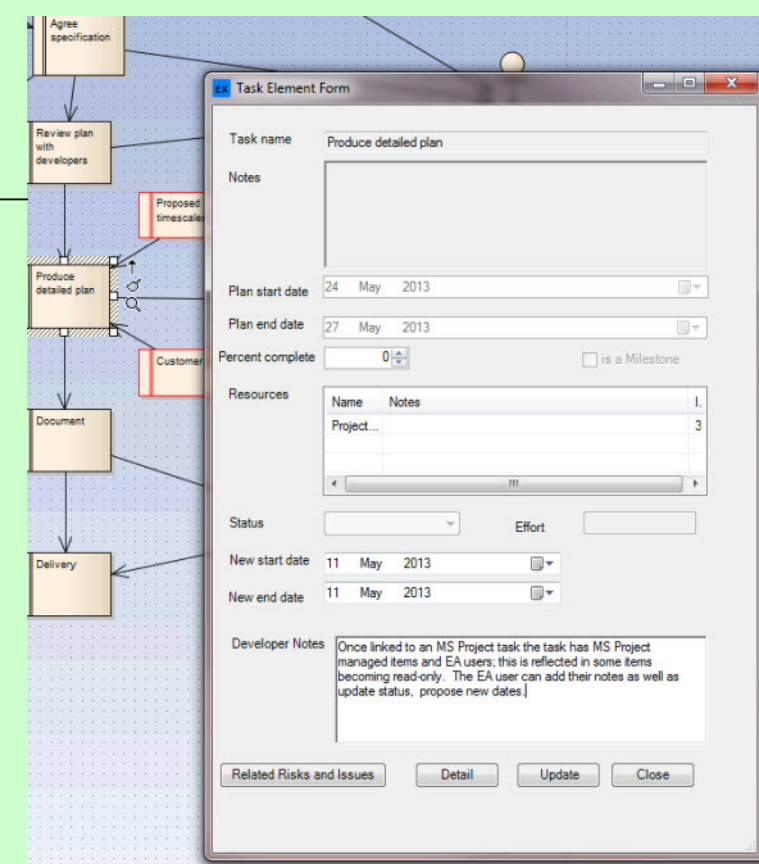
5. Risk and Issue status is highlighted in the task Gantt view.



7. Inspect / edit selected task information.



8. Review Related Risks and Issues then drill down into the specific Risk or Issue



4. View MS Project information, and provide updates/feedback, including the details of the risks and issues.

Interested? What do you want from EA - MS Project Interactions / Integrations - do let us know!